



**8.1 Schluter®-KERDI** Waterproofing membrane

Item No.	Length	Area	Thickness
<b>Roll width: 1 m - 3' 3"</b>			
KERDI 200/5M	16' 5" – 5 m	54 ft <sup>2</sup> – 5 m <sup>2</sup>	8 mil
KERDI 200/7M	23' – 7 m	75 ft <sup>2</sup> – 7 m <sup>2</sup>	8 mil
KERDI 200/10M	33' – 10 m	108 ft <sup>2</sup> – 10 m <sup>2</sup>	8 mil
KERDI 200/20M	65' 7" – 20 m	215 ft <sup>2</sup> – 20 m <sup>2</sup>	8 mil
KERDI 200	98' 5" – 30 m	323 ft <sup>2</sup> – 30 m <sup>2</sup>	8 mil
<b>Roll width: 2 m - 6' 7"</b>			
KERDI 200200/15M	49' 2-1/2" – 15 m	323 ft <sup>2</sup> – 30 m <sup>2</sup>	8 mil
KERDI 200200	98' 5" – 30 m	646 ft <sup>2</sup> – 60 m <sup>2</sup>	8 mil

**8.1 Schluter®-KERDI-DS** Waterproofing membrane

Item No.	Width	Length	Area	Thickness
KERDI-DS	3' 3" – 1 m	98' 5" – 30 m	323 ft <sup>2</sup> – 30 m <sup>2</sup>	20 mil



**8.1 Schluter®-KERDI-BAND** Waterproofing strip

Item No.	Width	Length	Thickness
KEBA 100/125/5M	5" – 12.5 cm	16' 5" – 5 m	4 mil
KEBA 100/125/10M	5" – 12.5 cm	33' – 10 m	4 mil
KEBA 100/185/5M	7-1/4" – 18.5 cm	16' 5" – 5 m	4 mil
KEBA 100/250/5M	10" – 25 cm	16' 5" – 5 m	4 mil
KEBA 100/125	5" – 12.5 cm	98' 5" – 30 m	4 mil
KEBA 100/185	7-1/4" – 18.5 cm	98' 5" – 30 m	4 mil
KEBA 100/250	10" – 25 cm	98' 5" – 30 m	4 mil



**8.1 Schluter®-KERDI-FLEX** Waterproofing strip for use above movement joints

Item No.	Width	Length	Thickness
FLEX 125/5M	5" – 12.5 cm	16' 5" – 5 m	12 mil
FLEX 250/5M	10" – 25 cm	16' 5" – 5 m	12 mil
FLEX 125/30	5" – 12.5 cm	98' 5" – 30 m	12 mil
FLEX 250/30	10" – 25 cm	98' 5" – 30 m	12 mil



**8.1 Schluter®-KERDI-KERECK-F** Preformed corner

Item No.	Thickness	Packaging
KEREC /FI 2	4 mil	2 inside corners
KERECK/FI 10	4 mil	10 inside corners
KERECK/FA 2	4 mil	2 outside corners
KERECK/FA 10	4 mil	10 outside corners



**8.1 Schluter®-KERDI-KERS-B** Preformed corner

Item No.	Thickness	Description	Packaging
KERECK 135 FI 2	4 mil	Inside corner, 135°	2 units
KERECK 135 FI 10	4 mil	Inside corner, 135°	10 units
KERSB 135 K LR	4 mil	Bench corners	1 right and 1 left
KERSB 135 K 5LR	4 mil	Bench corners	5 right and 5 left
KERSB 135 K	4 mil	Bench/ neo-angle corner kit	1 right and 1 left bench corner, and 2 135° inside corners

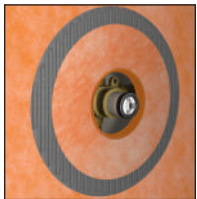




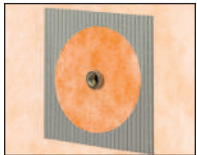
8.1 Schluter®-KERDI-KERS		Preformed corner	
Item No.	Thickness	Packaging	
KERS 20 L	4 mil	Left inside corner - 20 mm	
KERS 28 L	4 mil	Left inside corner - 28 mm	
KERS 20 R	4 mil	Right inside corner - 20 mm	
KERS 28 R	4 mil	Right inside corner - 28 mm	



8.1 Schluter®-KERDI-SEAL-PS		Pipe seal with over-moulded rubber gasket	
Item No.	Pipe nipple opening diam.	Thickness	Packaging
KMS 185/12	1/2" - 12.5 mm	4 mil	1 unit
KMS 185/20	3/4" - 20 mm	4 mil	1 unit
KMS 10185/12	1/2" - 12.5 mm	4 mil	10 units
KMS 10185/20	3/4" - 20 mm	4 mil	10 units



8.1 Schluter®-KERDI-SEAL-MV		Mixing valve seal with over-moulded rubber gasket	
Item No.	Mixing valve opening diam.	Thickness	Packaging
KMSMV 235/114	4-1/2" - 114 mm	4 mil	1 unit
KMSMV 10235/114	4-1/2" - 114 mm	4 mil	10 units



8.1 Schluter®-KERDI-KM		Pipe seal	
Item No.	Dimensions	Thickness	Packaging
KM 5117/22	7" x 7" - 17 x 17 cm	4 mil	5 units

Hole diameter,  $\phi = 7/8"$  - 22 mm



Schluter®-KERDI-TROWEL		Trowel	
Item No.	Notch size	Packaging	
TRL-KER6	1/8" x 1/8" - 3 x 3 mm	6 units	
TRL-KER	1/8" x 1/8" - 3 x 3 mm	1 unit	



Schluter®-KERDI-FIX		Adhesive/sealant	
Item No.	Description		
KERDIFIX + <i>color*</i>	Cartridge - 9.81 fl oz - 290 ml		
KERDIFIX 100 G	Tube - 3.38 fl oz - 100 ml		

**\*Color Codes**

		To complete the item number, add the <i>color</i> code (e.g., KERDIFIX / <i>BW</i> ).
Bright white	Grey	